

DO NOT SCALE. WORK TO FIGURED DIMENSIONS ONLY. ALL EXISTING DIMENSIONS TO BE CHECKED ON SITE. DRAWN ON AUTOCAD R2004 AT DEADY GAHAN ARCHITECTS LTD. LAYERS ON THIS DRAWING COMPLY WITH BS 1192: PART 5

Total No. CAR PARKING SPACES	No. 580	of which 505no are for the residential units and 75no are for visitors
Residential Units Parking	No. 505	of which 209no are within curtilage & 296no are provided for units but are not within curtilage
Visitor Parking	No. 75	at a rate of 1no visitor space per 4.8no units, 5% of the 368no not within curtilage/visitor parking spaces
Accessible Parking Spaces	No. 19	
EV Parking Spaces	No. 17 (of the 368no not within curtilage/visitor parking spaces)	in the form of 8no EV charging hubs (with 2no charging spaces each) and 1no. EV charger
Dwellings with in curtilage parking, pre-wired for future EV		

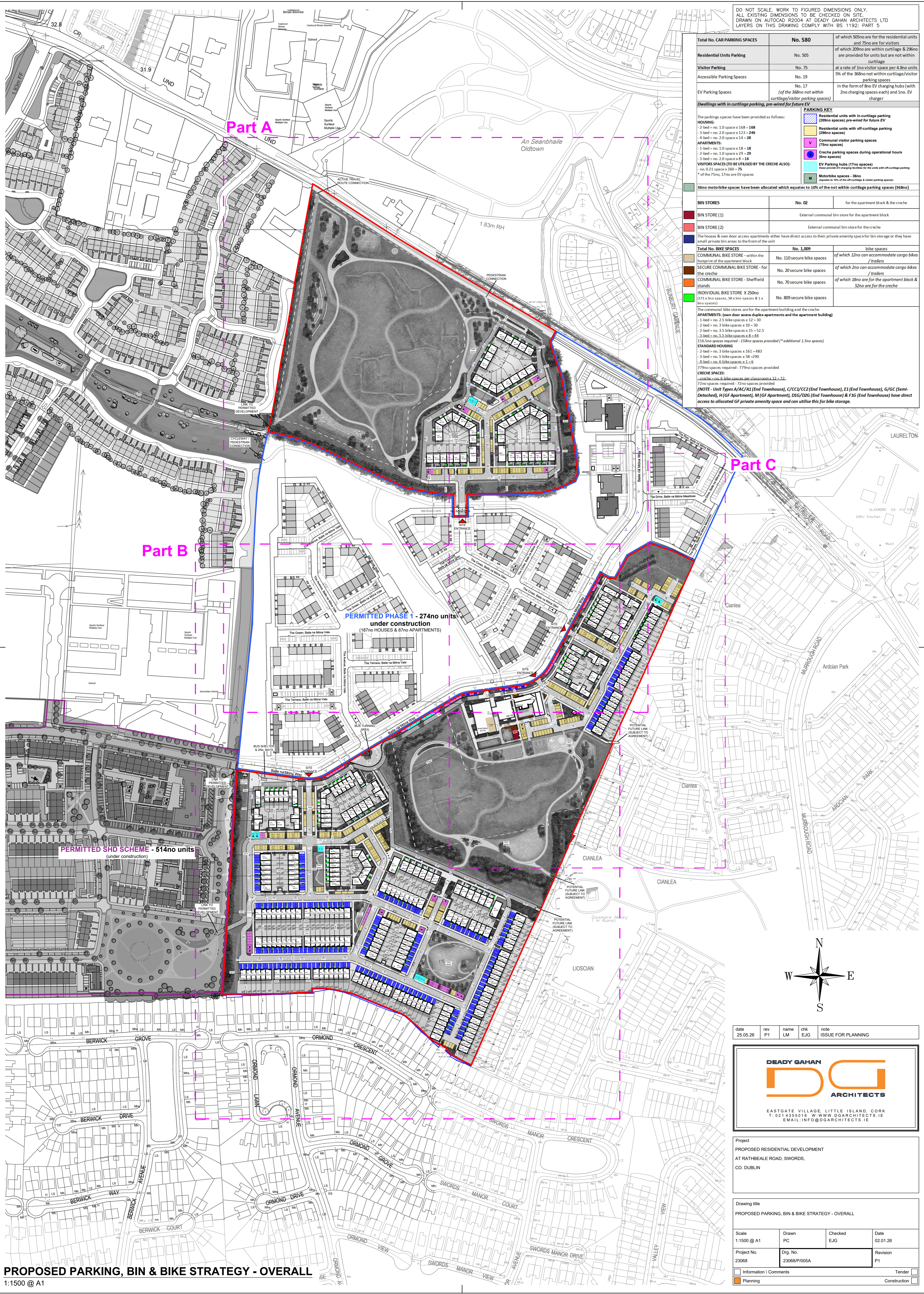
Residential units with in-curtilage parking (209no spaces) pre-wired for future EV	
Residential units with off-curtilage parking (296no spaces)	
Communal visitor parking spaces (75no spaces)	
Creche parking spaces during operational hours (8no spaces)	
EV Parking hubs (17no spaces) (one per 4.8no units with off-curtilage parking)	
Motorbike spaces - 36no (equates to 10% of the off-curtilage & visitor parking spaces)	

36no motorbike spaces have been allocated which equates to 10% of the not within curtilage parking spaces (368no)	
--	--

BIN STORES	No. 02	for the apartment block & the creche
BIN STORE (1)		External communal bin store for the apartment block
BIN STORE (2)		External communal bin store for the creche

Total No. BIKE SPACES	No. 1,009	bike spaces
COMMUNAL BIKE STORE - within the footprint of the apartment block	No. 110 secure bike spaces	of which 12no can accommodate cargo bikes / trailers
SECURE COMMUNAL BIKE STORE - for the creche	No. 20 secure bike spaces	of which 2no can accommodate cargo bikes / trailers
COMMUNAL BIKE STORE - Sheffield stands	No. 70 secure bike spaces	of which 18no are for the apartment block & 52no are for the creche
INDIVIDUAL BIKE STORE X 250no	No. 809 secure bike spaces	

The communal bike stores are for the apartment building and the creche
APARTMENTS: (own door access duplex-apartments and the apartment building)
 - 1-bed = no. 2.5 bike spaces x 12 = 30
 - 2-bed = no. 3 bike spaces x 10 = 30
 - 3-bed = no. 5.5 bike spaces x 15 = 82.5
 - 4-bed = no. 5.5 bike spaces x 8 = 44
 156.5no spaces required - 158no spaces provided (* additional 1.5no spaces)
STANDARD HOUSING
 - 2-bed = no. 3 bike spaces x 161 = 483
 - 3-bed = no. 5 bike spaces x 98 = 490
 - 4-bed = no. 6 bike spaces x 1 = 6
 779no spaces required - 779no spaces provided
CRECHE SPACES:
 - 20 no. 5 bike spaces per classroom x 12 = 72
 72no spaces required - 72no spaces provided
 (NOTE - Unit Types A/AC/A1 (End Townhouse), C/CC/CC2 (End Townhouse), E1 (End Townhouse), G/GC (Semi-Detached), H/GF (Apartment), M (GF Apartment), DIG/DIG2 (End Townhouse) & FG (End Townhouse) have direct access to allocated GF private amenity space and can utilise this for bike storage.)



PROPOSED PARKING, BIN & BIKE STRATEGY - OVERALL

1:1500 @ A1

date	rev	name	chk	note
25.05.26	P1	LM	EJG	ISSUE FOR PLANNING

DEADY GAHAN
DG
ARCHITECTS

EASTGATE VILLAGE, LITTLE ISLAND, CORK
 T: 021 4355016 W: WWW.DGARCHITECTS.IE
 EMAIL: INFO@DGARCHITECTS.IE

Project
 PROPOSED RESIDENTIAL DEVELOPMENT
 AT RATHBEALE ROAD, SWORDS,
 CO. DUBLIN

Drawing title
 PROPOSED PARKING, BIN & BIKE STRATEGY - OVERALL

Scale 1:1500 @ A1	Drawn PC	Checked EJG	Date 02.01.26
Project No. 23068	Dwg. No. 23068/P1005A	Revision P1	

Information | Comments | Tender | Construction